

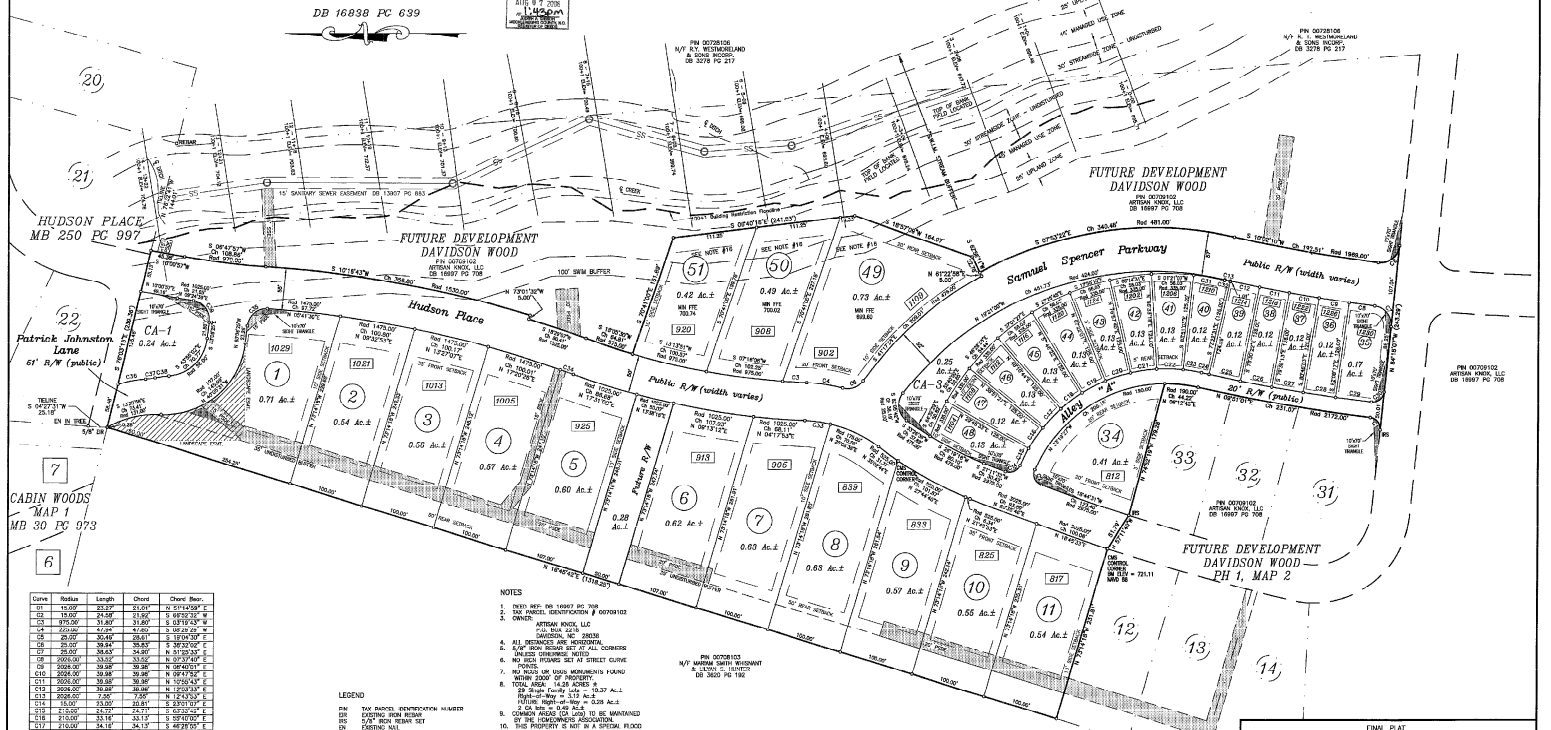
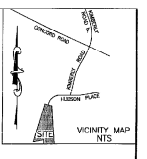
CERTIFICATE OF APPROVAL FOR RECORDING
 2406161198
 I hereby certify that the subdivision and street shown have been found to comply with the provisions of the Ordinance of the Board of Commissioners for the City of Davidson, North Carolina, and that the same have been approved by the Board of Commissioners on this 16th day of August 2006.
 Date: 8-16-06
 Position: Planning Director, Davidson, North Carolina

CERTIFICATE OF APPROVAL OF THE DESIGN AND INSTALLATION OF STREETS, UTILITIES AND OTHER FEATURES
 I hereby certify that all streets, utilities and other features represented hereon have been installed in accordance with the Ordinance of the Board of Commissioners for the City of Davidson, North Carolina, and that the same have been approved by the Board of Commissioners on this 16th day of August 2006.
 Date: 8-16-06
 Position: Planning Director, Davidson, North Carolina

CERTIFICATE OF OWNERSHIP AND SUBDIVISION
 I hereby certify that I am the owner of the property shown and described herein, and that I hereby divide the said property into lots, tracts, shares, and sections in severalty, tenancy in common, or otherwise as herein expressed, and that the same have been approved by the Board of Commissioners for the City of Davidson, North Carolina, on this 16th day of August 2006.
 Date: 8-16-06
 Position: David J. Goff

Review Officer's Certificate
 STATE OF NORTH CAROLINA
 COUNTY OF MECKLENBURG
 Review Officer of the Board of Commissioners for the City of Davidson, North Carolina, hereby certifies that the map is in accordance with the provisions of the Ordinance of the Board of Commissioners for the City of Davidson, North Carolina, on this 16th day of August 2006.
 Date: 8-16-06
 Position: Review Officer

CERTIFICATE OF APPROVAL FOR RECORDING
 I hereby certify that this map is in accordance with the provisions of the Ordinance of the Board of Commissioners for the City of Davidson, North Carolina, on this 16th day of August 2006.
 Date: 8-16-06
 Position: Planning Director, Davidson, North Carolina



Curve	Radius	Length	Chord	Chord Bear.
C1	120.00	33.33	33.33	90.00°
C2	150.00	41.89	41.89	90.00°
C3	180.00	50.00	50.00	90.00°
C4	210.00	57.74	57.74	90.00°
C5	240.00	65.16	65.16	90.00°
C6	270.00	72.28	72.28	90.00°
C7	300.00	79.13	79.13	90.00°
C8	330.00	85.72	85.72	90.00°
C9	360.00	92.08	92.08	90.00°
C10	390.00	98.22	98.22	90.00°
C11	420.00	104.15	104.15	90.00°
C12	450.00	109.88	109.88	90.00°
C13	480.00	115.43	115.43	90.00°
C14	510.00	120.80	120.80	90.00°
C15	540.00	126.00	126.00	90.00°
C16	570.00	131.04	131.04	90.00°
C17	600.00	135.93	135.93	90.00°
C18	630.00	140.67	140.67	90.00°
C19	660.00	145.27	145.27	90.00°
C20	690.00	149.74	149.74	90.00°
C21	720.00	154.08	154.08	90.00°
C22	750.00	158.30	158.30	90.00°
C23	780.00	162.40	162.40	90.00°
C24	810.00	166.38	166.38	90.00°
C25	840.00	170.25	170.25	90.00°
C26	870.00	174.01	174.01	90.00°
C27	900.00	177.67	177.67	90.00°
C28	930.00	181.23	181.23	90.00°
C29	960.00	184.70	184.70	90.00°
C30	990.00	188.08	188.08	90.00°
C31	1020.00	191.38	191.38	90.00°
C32	1050.00	194.60	194.60	90.00°
C33	1080.00	197.75	197.75	90.00°
C34	1110.00	200.83	200.83	90.00°
C35	1140.00	203.84	203.84	90.00°

- NOTES
1. REFER TO PLAT 2406161198 FOR THE ORIGINAL SUBDIVISION.
 2. OWNER: DAVIDSON WOOD, INC.
 3. ALL MEASUREMENTS ARE IN FEET AND DECIMALS THEREOF.
 4. ALL LOTS ARE TO BE MAINTAINED AS SINGLE-FAMILY RESIDENTIAL.
 5. ALL LOTS ARE TO BE MAINTAINED AS SINGLE-FAMILY RESIDENTIAL.
 6. ALL LOTS ARE TO BE MAINTAINED AS SINGLE-FAMILY RESIDENTIAL.
 7. ALL LOTS ARE TO BE MAINTAINED AS SINGLE-FAMILY RESIDENTIAL.
 8. ALL LOTS ARE TO BE MAINTAINED AS SINGLE-FAMILY RESIDENTIAL.
 9. ALL LOTS ARE TO BE MAINTAINED AS SINGLE-FAMILY RESIDENTIAL.
 10. ALL LOTS ARE TO BE MAINTAINED AS SINGLE-FAMILY RESIDENTIAL.
 11. ALL LOTS ARE TO BE MAINTAINED AS SINGLE-FAMILY RESIDENTIAL.
 12. ALL LOTS ARE TO BE MAINTAINED AS SINGLE-FAMILY RESIDENTIAL.
 13. ALL LOTS ARE TO BE MAINTAINED AS SINGLE-FAMILY RESIDENTIAL.
 14. ALL LOTS ARE TO BE MAINTAINED AS SINGLE-FAMILY RESIDENTIAL.
 15. ALL LOTS ARE TO BE MAINTAINED AS SINGLE-FAMILY RESIDENTIAL.
 16. S.W.N.M. NOTES (see Town of Davidson Planning Ordinance 15.0 for exact descriptions)

DAVIDSON WOOD - PHASE 1 MAP 1
 60° 30' 0" 90° 120° 240°
 MITCHAM & ASSOCIATES, P.A.
 21343 Columbia Avenue
 Charlotte, NC 28203
 (704) 967-7466
 (704) 967-7467 FAX
 SURVEYED BY: DOWN CASE CHECKED BY: APPROVED BY: JOB NO. 0603
 SCALE: 1" = 60'
 SHEET 07