

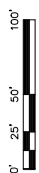
**DAVIDSON WOODS
PHASE II SUBDIVISION**
100% CONSTRUCTION DOCUMENTS
DAVIDSON, NORTH CAROLINA



SEAL

KEY PLAN

SCALE: 1"=50'



REV	DATE	BY	DESCRIPTION
1	07/27/17	ADS	TOWN COMMENTS
2	05/17/17	ADS	TOWN COMMENTS

REVISIONS

DRAWN BY: TRK
APPROVED BY: TJD
CHECKED BY: TJD
DATE: 10-06-16
TITLE: SITE PLAN

SITE PLAN

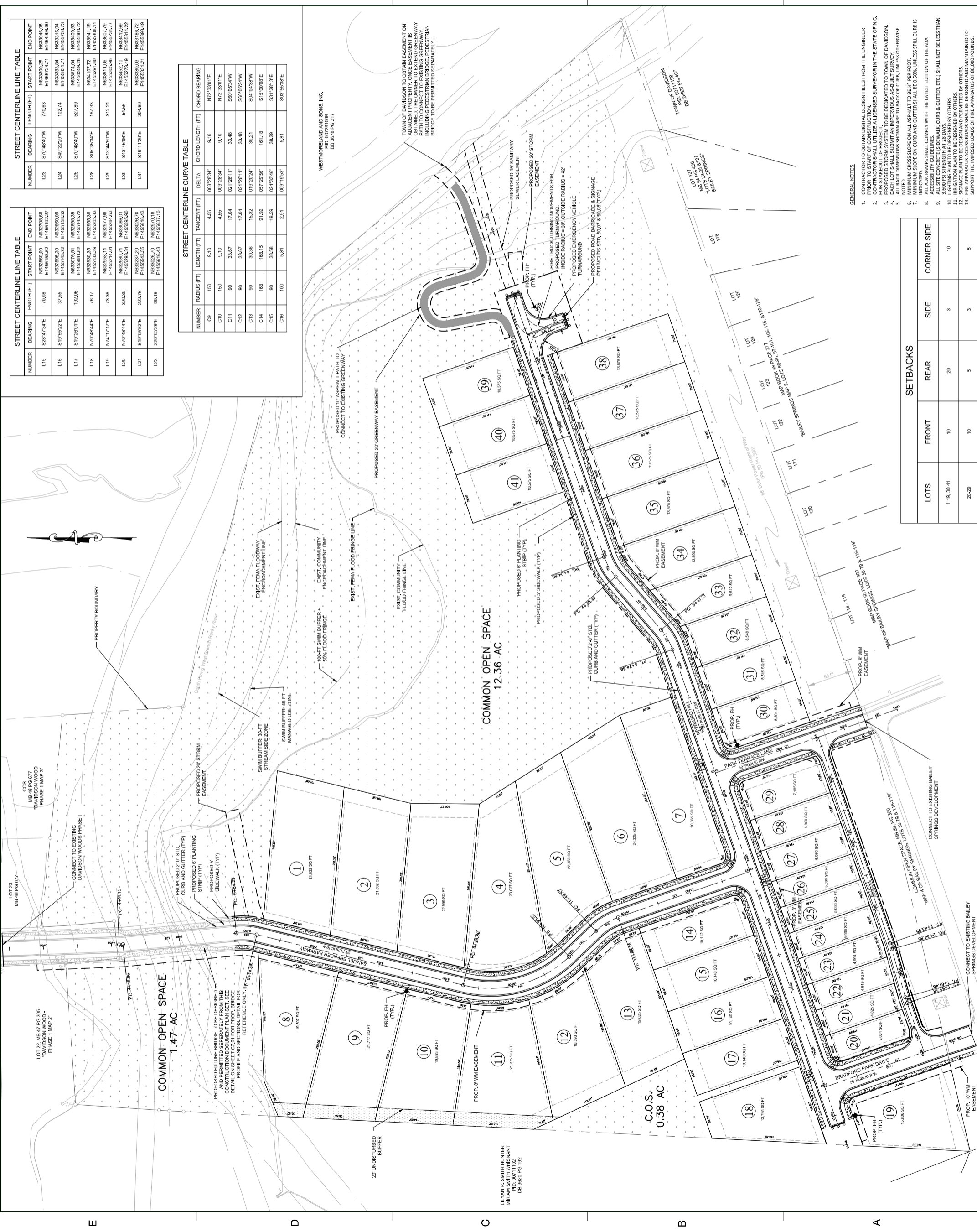
PROJECT NO. 5007475

C2.01

NUMBER	BEARING	LENGTH (FT)	START POINT	END POINT
L23	S70°49'40"W	770.63	N633046.05 E1454966.50	N633000.25 E1454966.50
L24	S49°22'29"W	102.74	N633115.64 E1455752.73	N633115.64 E1455752.73
L25	S70°49'40"W	527.89	N633115.64 E1455932.28	N633115.64 E1455932.28
L28	S05°35'34"E	167.33	N631007.72 E1455932.28	N631007.72 E1455932.28
L29	S13°44'50"W	312.21	N633911.08 E1455932.28	N633911.08 E1455932.28
L30	S43°55'09"E	54.56	N633442.10 E1455932.28	N633442.10 E1455932.28
L31	S19°11'20"E	204.69	N633386.03 E1455331.21	N633386.03 E1455331.21

NUMBER	BEARING	LENGTH (FT)	START POINT	END POINT
L15	S28°47'34"E	70.08	N632708.89 E1455182.27	N632708.89 E1455182.27
L16	S19°55'22"E	37.55	N632902.39 E1455182.27	N632902.39 E1455182.27
L17	S19°28'01"E	192.06	N633075.51 E1455182.27	N633075.51 E1455182.27
L18	N70°48'44"E	76.17	N632905.38 E1455182.27	N632905.38 E1455182.27
L19	N74°17'17"E	73.36	N632977.88 E1455182.27	N632977.88 E1455182.27
L20	N70°48'44"E	320.39	N633086.01 E1455263.51	N633086.01 E1455263.51
L21	S19°05'52"E	222.76	N633026.70 E1455644.58	N633026.70 E1455644.58
L22	S20°02'29"E	80.19	N632970.18 E1455637.10	N632970.18 E1455637.10

NUMBER	RADIUS (FT)	LENGTH (FT)	TANGENT (FT)	DELTA	CHORD LENGTH (FT)	CHORD BEARING
C9	150	9.10	4.55	003°29'34"	9.10	N72°33'01"E
C10	150	9.10	4.55	003°29'34"	9.10	N72°33'01"E
C11	90	33.67	17.04	021°26'11"	33.48	S60°05'54"W
C12	90	33.67	17.04	021°26'11"	33.48	S60°05'54"W
C13	90	30.36	15.32	019°22'24"	30.21	S04°04'58"W
C14	168	168.15	91.92	057°29'56"	161.18	S15°00'08"E
C15	90	36.58	18.59	024°33'46"	36.29	S31°28'13"E
C16	100	5.81	2.91	003°19'53"	5.81	S03°55'38"E



- GENERAL NOTES
- CONTRACTOR TO OBTAIN ALL NECESSARY PERMITS FROM THE ENGINEER PRIOR TO START OF CONSTRUCTION.
 - CONTRACTOR SHALL UTILIZE A LICENSED SURVEYOR IN THE STATE OF N.C. FOR STAKEOUT OF PROJECT.
 - ALL DIMENSIONS SHOWN ARE TO BACK OF CURB, UNLESS OTHERWISE NOTED.
 - MINIMUM CROSS SLOPE ON ALL ASPHALT TO BE 1/2" PER FOOT.
 - MINIMUM SLOPE ON CURB AND GUTTER SHALL BE 0.50%, UNLESS SPILL CURB IS INDICATED.
 - ACCESSORY UTILITIES SHALL COMPLY WITH THE LATEST EDITION OF THE ADA.
 - ALL SITE CONCRETE (SIDEWALK, CURB & GUTTER, ETC.) SHALL NOT BE LESS THAN 3,600 PSI STRENGTH AT 28 DAYS.
 - IRRIGATION PLAN TO BE DESIGNED BY OTHERS.
 - SIGNAL PLAN TO BE DESIGNED BY OTHERS.
 - FIRE APPARATUS ACCESS ROADS SHALL BE DESIGNED AND MAINTAINED BY OTHERS.
 - SUPPORT THE IMPOSED LOADS OF FIRE APPARATUS OF 80,000 POUNDS.

LOTS	FRONT	REAR	SIDE	CORNER SIDE
1-19, 30-41	10	20	3	10
20-29	10	5	3	5